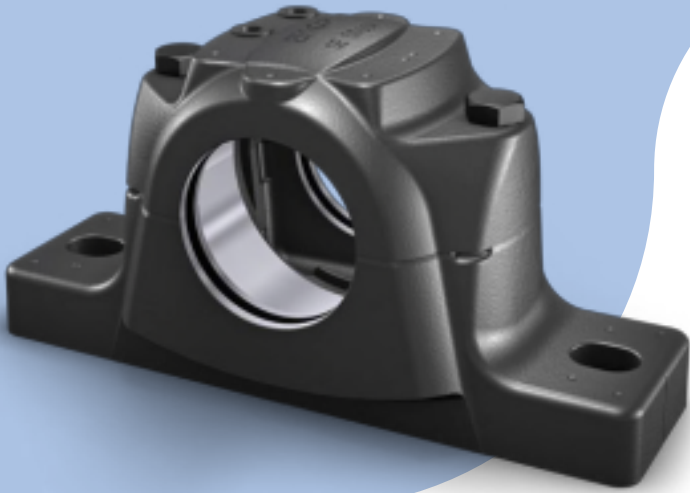


Why SKF?

SE bearing housings



SKF bearing housings have set the standard for split bearing housings since several decades. SKF offers stiff and robust bearing housings which minimize the risk of deforming the bearings and housings. In addition, accurate machining of the bearing seating helps maximize SKF bearing service life.

The housings design enables efficient distribution of grease to the bearing for best possible bearing performance during operation. This design also enables heat dissipation via the supporting surface for reduced grease consumption to reduce environmental impact.

Product features

- A modular design concept for a wide range of options for SKF self-aligning bearing systems
- A stiff and robust design made of high grade grey cast iron and ductile iron
- Very high machining accuracy
- A grease guiding system for efficient grease distribution
- Two options for grease fittings
- Grease escape hole as an option
- Identification markings on caps and bases
- Alignment marks in base to simplify mounting
- Dimples to attach condition monitoring equipment
- Corrosivity class C3 according to ISO 12944 2:1998

User benefits

- Long bearing service life
- Reliable housing and bearing performance during operation
- Easy and reliable mounting
- Long relubrication intervals
- Low grease usage
- Low operating temperature
- Low maintenance costs
- Reduced environmental impact

Common industries, examples

- Mining, mineral processing and cement
- Material handling
- Metals
- Fluid machinery
- Marine



Industry leading performance

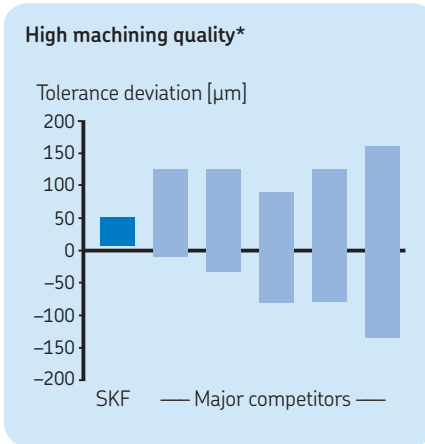
High machining quality

Extremely accurate tolerances provide low running temperature and long bearing and housing service life.

High strength material

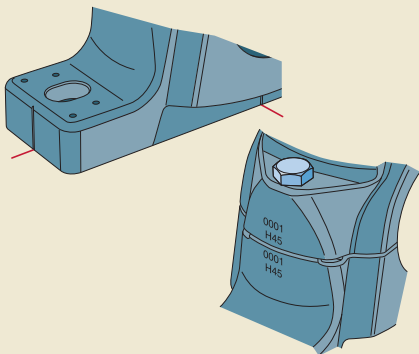
High grade of grey cast iron enables high carrying capacity. Housing in ductile iron is an option for high shock loading.

* Competitor comparisons are based on measurements of selected European and Asian manufacturers, based on SKF laboratory tests.

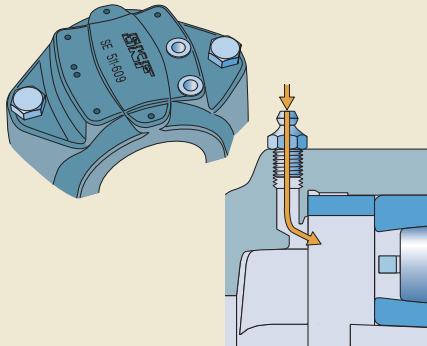


New housing design for longer life and easier maintenance

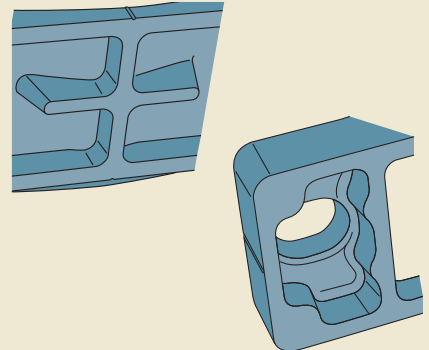
Easy and reliable mounting



Efficient grease distribution

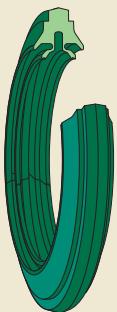


Very good heat dissipation



A wide range of seals

Seals for SE series 2, 3, 5 and 6



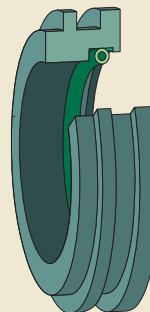
4-lip seal



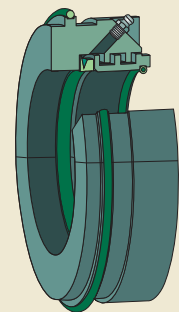
Felt ring seal



V-ring seal



Labyrinth seal



Taconite seal

© SKF is a registered trademark of the SKF Group.

© SKF Group 2012

The contents of this publication are the copyright of the publisher and may not be reproduced (even extracts) unless prior written permission is granted. Every care has been taken to ensure the accuracy of the information contained in this publication but no liability can be accepted for any loss or damage whether direct, indirect or consequential arising out of the use of the information contained herein.

PUB BU/P9 13014 EN · September 2012

